



PREMIER POWER PRODUCTS (CAL) PVT LTD

# **CABLE TRAY CATALOGUE**





# Introduction



We are a WORLD CLASS LEADER and an ISO 9001:2008 Certified Organization, in the field of manufacturing of GI/Al Cable Trays - Perforated and Ladder type both with it's accessories, Flexible Type Cable Tray Support System, Cable Ducts, Earthing Materials, Manual Gratings, Street Light Poles including High Mast Poles, Sub-Station Towers, EHV Sub-Station Clamps & Connectors etc. We maintain International Standards & cater materials meant for Industrial and Marine applications of various Clients across the Globe.

We are now venturing into the field of manufacturing Electro Forged Gratings at our works near Kolkata. This modern plant of international class, is entirely managed by highly competent professionals having a vast experience in this field. Presenting hereby an exclusive Product Catalogue for your ready reference & knowledge about our vision & mission with the said product.

This catalogue is a brief outline of the many styles and materials in which gratings are produced by us, each of which is distinguished by excellence in design, material and workmanship. We produce every type of gratings in the market today, at our own plant. Whatever the material, whatever the style, we can make it. Whenever customers specify us their requirements they are assured of getting the rigid adherence to the highest standards of quality that has made us the clear leader in its field.

Premier Electroforged Gratings is the recommended style

for general Installation. It is economical, durable and the most versatile of the various types of metal gratings. Precise, automated production equipment combines hydraulic pressure with a powerful electric welding current to electro forge the cross bars and bearing bars into a single rigid panel. This method eliminates cracks or open joints which might harbor moisture or other corrosive materials.

The twisted steel cross bars of our Electro Forged Gratings provide excellent traction and a flush surface. Our standard manufacturing and installation tolerances conform to the grating industry standard as established by the National Association of Architectural Metal Manufacturers - NAAMM.

Our Electroforged Gratings in standard sizes and styles, is usually available for same day shipment.

We have a state of art fabrication unit of 9540 Sq. mtr. for manufacturing Electro Forged Gratings with ultra modern fabrication and welding facilities. Our gratings manufacturing machine is imported from Germany, with an installed manufacturing capacity of 18,000 MT per annum.

Our manufactured products are regularly inspected by third party inspection agencies like : Lloyds Register of Shipping, Bureau Veritas, EIL, IDEA, MECON Ltd, PDIL, M.N. Dastur & Co., DNV etc.





## Managing Director's Review



*Dear friends,*

We being a part of the Indian manufacturing sector are obligated to extend the best of our endeavor for the evolution of the nation - economically as well as technologically. The ability to 'THINKBIG', complete devotion to high business ethics, having positivity of mind in order to achieve the desired results, commitment to the time schedule and above all transparency in all aspect of business are just some of the characteristics of our organisation. Our Company relies heavily on the most advanced technological measures to create modern marvels of engineering products.

Growing organically and rapidly but steadily, as a successful engineering business enterprise, a symbol of engineering excellence, possessing vast storehouse of highly qualified and skilled manpower, totally motivated and dedicated to their respective disciplines.

We continue to contribute by humble means, to the growth of this nation for which we are proud.

Thanking you

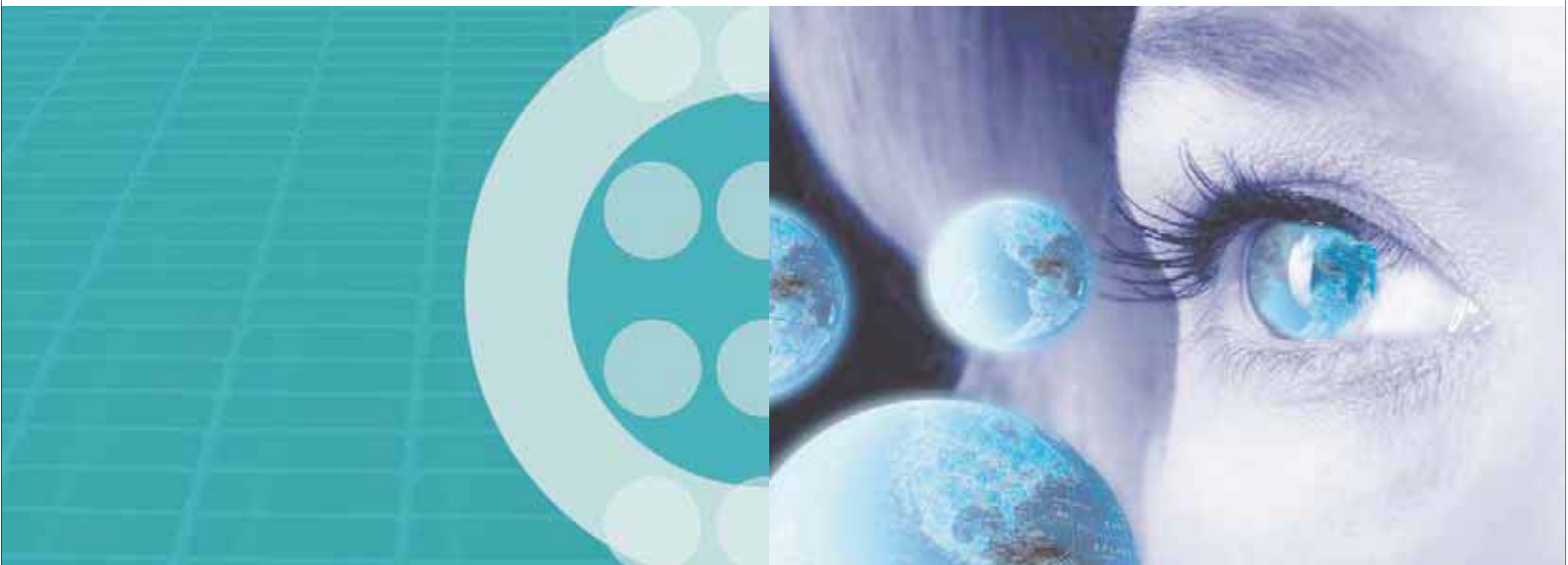
*Dharmendra Kr. Daga*

**Managing Director**





## Vision & Mission



### Vision

- ▶ To be recognized and endorsed as a brand, involved in developing, nurturing and flourishing, nationally and globally as an engineering business enterprise.
- ▶ Rendering engineering services of un compromising quality that are best value for money based on sound engineering principles.
- ▶ Seize and create market opportunities to emerge as a leading producer of premium quality gratings.
- ▶ Enhance quality and reduce cost through continuous modernized technical innovation.
- ▶ Optimise the potential of workforce and create future leaders. Improve employees working environment, motivation and quality of life.
- ▶ Ensure safety and sustainability of the environment.

### Mission

- ▶ To identify business opportunities globally, provide high quality value-added engineering services related to electrical power industry.
- ▶ To excel and surpass customer needs, by the teamwork of all our genuine professionals, highly accomplished in their respective field.
- ▶ Make our market presence known to every industry through quality engineered products.
- ▶ Continuous improvement of business procedures and practices, to achieve optimal organizational efficiency, overall employee participation by innovation, dynamism motivation and dedication.
- ▶ Strive to build long-term business association with customers & also uphold our commitment to society and environment.





# B Business Philosophy



We at Premier Power Products, recognise that success must be earned through hard work, responsiveness to customers and employee needs & integrity in all business practices. We are dedicated to a continuing process of honest introspection regarding our Company practices and policies in order to maintain the professional competence efficacy. The focus of corporate values in governance, administration and general structure of the Company is to establish a series of practical responses which instigates the application of core values towards ethical business practice which will serve as blueprint for our success in future.

Our values define our organization, guide our behavior, underpin operational activity and shape the strategies being pursued in face of various challenges and opportunities. Our corporate culture is founded upon the following integrated principals :

- ▶ Risk-taking i.e. taking on big challenges and seeing them.
- ▶ Result orientation i.e. profit, but from work that benefits humanity.
- ▶ Customer orientation i.e. passion for customers.
- ▶ Constructive self-criticism, self-improvement and personal excellence.
- ▶ Inspiring growth, innovation, passion reinforced by professional mindset.
- ▶ Continuous improvement by striving to do right things safely & efficiently.
- ▶ Adoption of policies & procedures with Zero tolerance for deviation.
- ▶ Fostering a culture of accountability and resourcefulness.
- ▶ Cross functional team work.
- ▶ Maintain professional confidentiality.







# B

## Business Partners








## Quality the Five Factors



### Quality Management Systems

Our Companies strategic decision to establish a Quality Management Systems (QMS) to comply with ISO 9001:2008 was influenced by dictates of Professional business practices. The aim is to outshine within the business fraternity by continuously registering improvement in the organisation's business performance, satisfaction of customer needs/expectations and its manpower resource management. Thus the Quality Management Systems is being successfully implemented, maintained and continuously improved upon. Routine internal audit are carried out and the findings thus derived have become effective tools for improvement in operational efficacy.

### Quality Policy

Quality is the buzzword here. Our passion ensures that every cell of the organisational structural, in thought, word and deed, breathes quality. Quality is a dedicated, participative phenomenon that is cultivated by systematic teaching, learning and

practising and not just the results of any concentrated effort merely to be conscious of it.

### Quality Objective

Customer satisfaction is the lifeblood of our organisation. We aim to earn customer trust by rendering high quality service and thorough participation of qualified, skilled, motivated and dedicated manpower resources as well as high quality material resources. By aspiring for continuous improvement in all aspects of Business Procedures and Quality Management Systems, we lay the foundation for our Quality Assurance.

### Quality Assurance

The system implementation of quality procedures and methodologies is the basis of our quality assurance to our customers, clients and engineering project consultants. This guides us to implement, maintain & enhance our Quality Management Systems with regard to the process efficiency, manpower resources management and overall operational efficiency.



“Quality is never an accident; it is always the result of high intention, sincere effort, intelligent direction and skillful execution; it represents the wide choice of many alternatives.”

- William A. Foster



Awareness of the quality policy and quality objectives are included in the employees at the induction training programme. Future education is imparted to them on the importance of quality in business and engineering function. Each employee is motivated for self elevation as a quality performer in the organization, during regular refresher training programmes.

The corporate management of our Company regularly evaluates the function of the QMS at the management quality review meetings. They also demonstrate

leadership in breathing the quality culture in them and encourage employees to put forth innovative quality proposals for continuous improvement of the quality system.

## Quality Accreditation

Our Company is in the process of going through the systematic drills and exercises for accreditation by ISO 14001:2004 Environmental Management Systems.

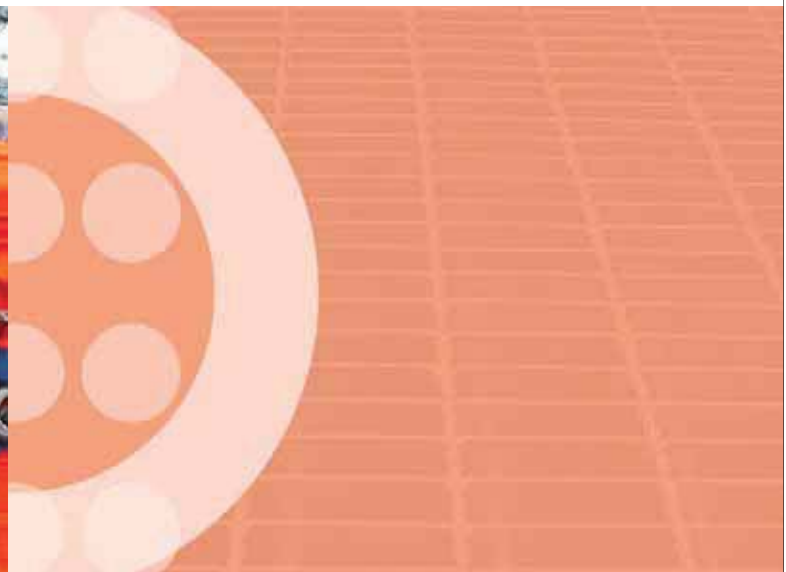
## Prestigious Client Approvals







# Health, Safety, Security, Environmental Plan



At Premier Power Products, a sense of responsibility towards the environment in which it operates, is of utmost importance. This sense of responsibility is what makes its business truly sustainable.

The HSSE Plan of Premier addresses and encompasses all the probable incidents and accidents in any Industrial Project Enviroment to meet the diverse compliance criteria for all sorts of industrial projects.

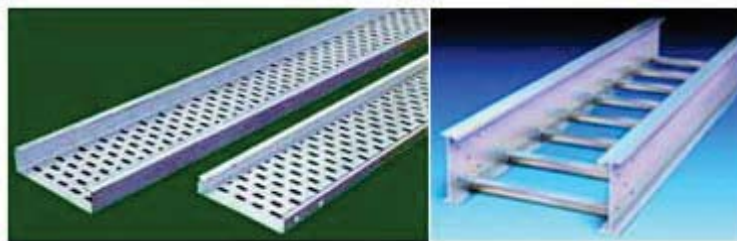
- ▶ Effective conservation of water through re-cycle and re-use.
- ▶ Efficient air and water pollution measures following the principles as laid down by various government agencies.
- ▶ Awareness among the employees related to environmental policies and improvement in their knowledge regarding environment preservation.
- ▶ Constant awareness, training and review of safety process and safety audits.
- ▶ Emergency management plans in case of emergencies.
- ▶ Mock drills for disaster managenent.



At Premier Power Products, a sensitive concern for the community and the world makes our business model truely sustainable. Such is the awarness to the HSSE culture that is reflected in the performance of all their tasks. Safe, secure, healthy and enviroment friendly working practices are seen as a natural habit.

# Product Range

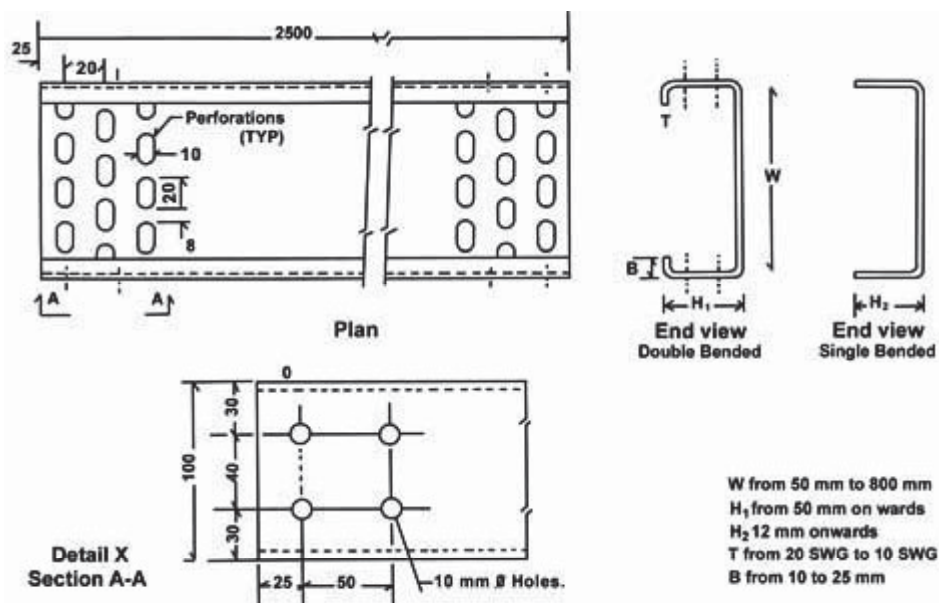
## POWER CABLE TRAYS



### Product Description

Mainly used for laying and storing of power cable and control cables installed in the site of the project. These are hot dipped galvanized to prevent it from rusting due to exposure to the atmosphere.

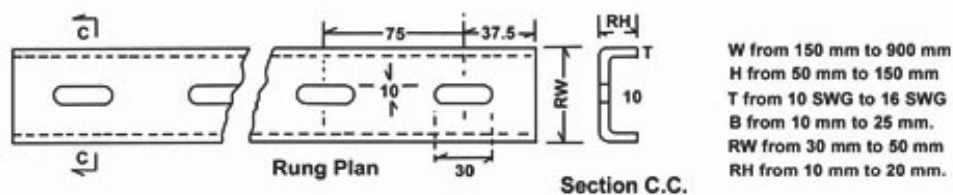
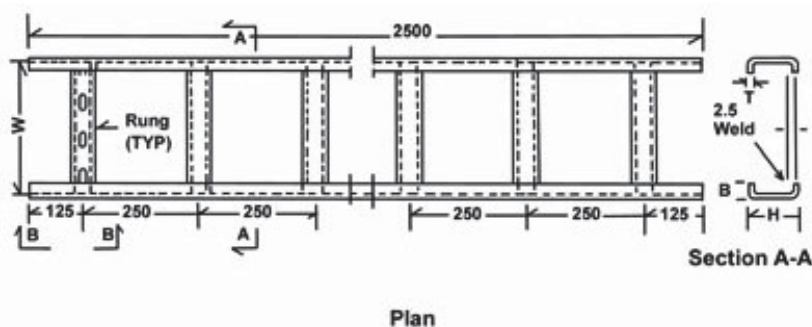
## POWER PERFORATED TYPE CABLE TRAYS (PCT)



**Codes & Standards: International Standards. Complying with the specifications of NEC (National Electric Codes) & NEMA (National Electric Manufacturers Association)**

# Product Range

## POWER LADDER TYPE CABLE TRAYS (LCT)

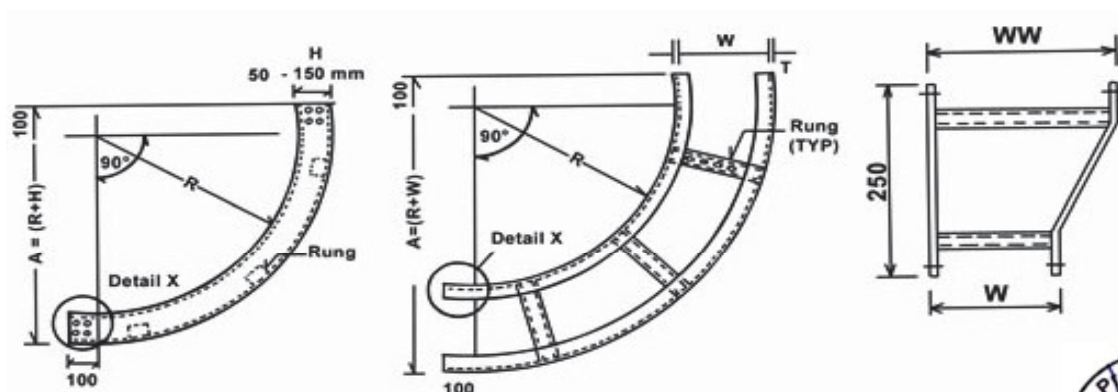


## POWER LADDER TYPE CABLE TRAYS ACESSORIES

### Vertical Bend (Elbow)

### Horizontal Bend

### Reducer



### 2. Material finish :

Steel : As per IS 1079 Gr "0" and IS 2062.

Aluminium Anodizing test : As per IS 1868 of 1982

Galvanizing :- As per IS 2629 / IS 4759 / BS 729 ASTM 123 & ASTM A386



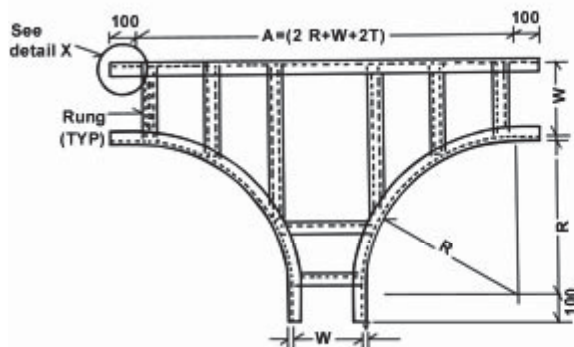


# Product Range

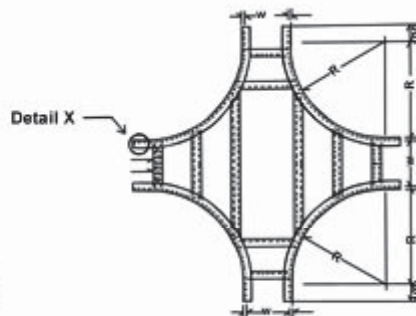


## LADDER TYPE CABLE TRAYS ACCESSORIES

Horizontal Tee

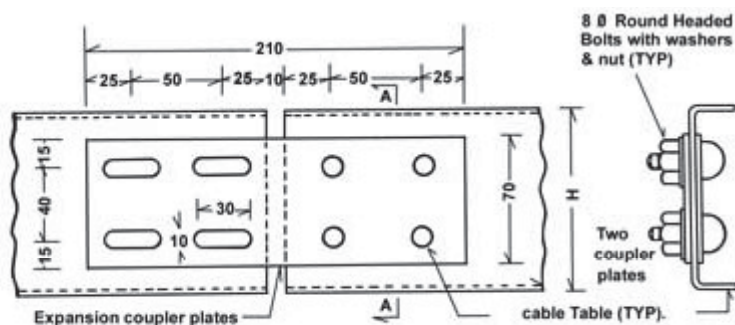


Horizontal Cross



Coupler plate typical for Ladder Type and Perforated Type Trays.

- In order to maintain, Proper earth continuity bond, painting on surfaces in contact between coupler plates and cable Tray shall be scrapped at the time of installation.
- Details are typical for ladder and perforated type cable Tray, accessories.

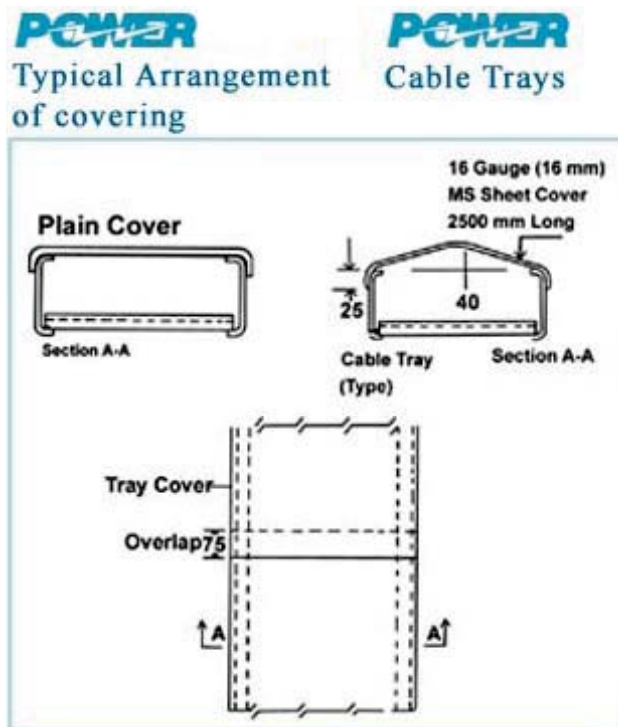


Necessary connecting GI bolts, nuts and washers shall be supplied with Coupler Plates.



## Product Range

### 3. Typical Arrangement of Covering



### 4. Following finishes will be given for cable trays :

1. Painted with red oxide
2. Red lead
3. Finished coat of Enamel Paint
4. Hot Dip Galvanized
5. PVC Coated
6. Powder Coated
7. Aluminium Anodized.



## Product Range

### Schedule of permissible loads

All figures given represent the maximum permissible uniformity distributed load in kgs. per running meter

#### Unsupported Free Span

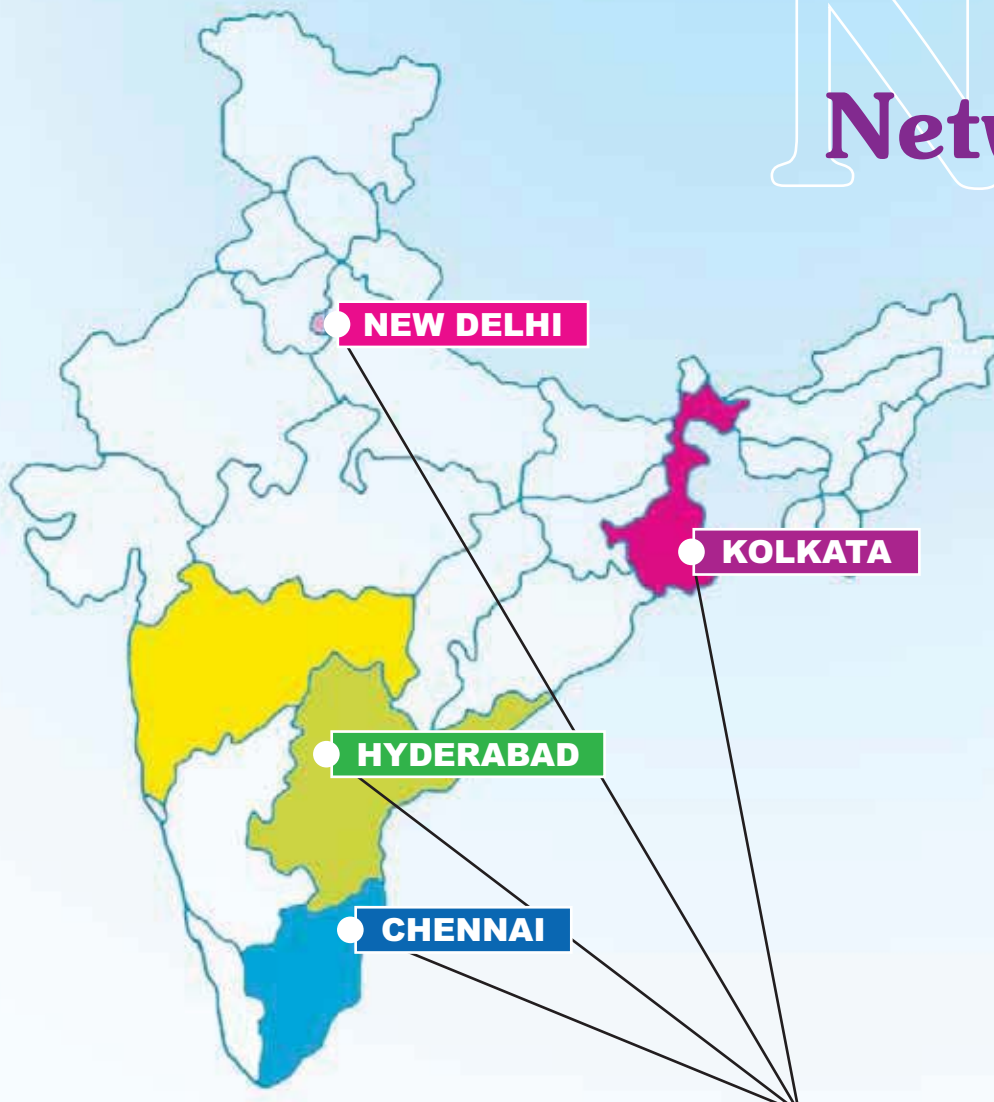
W	Size	H	600mm	1200mm	1800mm	2500mm
100 mm x 1.6 mm x 50mm			1430	355	156	87
150 mm x 1.6 mm x 50mm			1458	362	159	88
225 mm x 1.6 mm x 50mm			1498	371	160	89.4
300 mm x 1.6 mm x 50mm			1540	380	162	91.3
375 mm x 2mm x 50mm			1955	483	210	116.7
450 mm x 2mm x 50 mm			1958	483	210	110.7
600 mm x 2mm x 50mm			1964	481	208	110.4
300 mm x 2mm x 62.5mm			2680	664	290	161.1
375 mm x 2mm x 62.5mm			2685	664	290	161.3
450 mm x 2mm x 62.5mm			2689	664	289	158.9
600 mm x 2mm x 62.5mm			2698	664	289	157.1
750 mm x 2mm x 62.5mm			2707	666	287	155.7
900 mm x 2mm x 62.5mm			2716	667	287	153.7
600 mm x 2mm x 75mm			3491	861	377	206.5
750 mm x 2mm x 75mm			3513	868	377	205.02
900 mm x 2mm x 75mm			3535	874	378	205.02

#### Formula

The maximum permissible point load at-mid-span may be obtained from the formula  $p = \frac{1}{2} XU \times S$  Where P = maximum permissible point load in lgs. at mid-span. U = maximum permissible uniformly distributed load in kg per running meter. S = the particular free span in meter. Free Span Exceeding 16ft. are not recommended.



# N Networks



**PREMIER POWER PRODUCTS (CAL) PVT. LTD.**

## HEAD OFFICE :

### KOLKATA

**Mr. Hemant Daga**

Contact : +91 9331008739

hemantdaga@dagaventures.com

pppdaga@airtelmail.in

"Merlin Legend"

3, Harish Mukherjee Road

3rd Floor, Kolkata - 700 020

Phone : +91 33 4006 5779

## MANUFACTURING UNIT :

Jalan Industrial Estate

Gate No. : 1, 1st Right Lane

Near NH - 6, Vill : Jangalpore

P.O. : Domjur, Howrah - 711 411

West Bengal

## BRANCH OFFICES :

### NEW DELHI

**Mr. Zohaib Hussain**

Contact : +91 9311674041

pppnrcr@yahoo.com

D-5, 1st Floor

Shaheen Bagh, Jamia Nagar

Okhla, New Delhi - 110 025

### CHENNAI

**Mr. A. S. Pillai**

Contact : +91 9840061385

pppchennai@rediffmail.com

51, Bajainai Koil Street

Pattaravakkam, Ambattur Taluk

Chennai - 600 098

### HYDERABAD

**Mr. K. Giridhar**

Contact : +91 9849857361

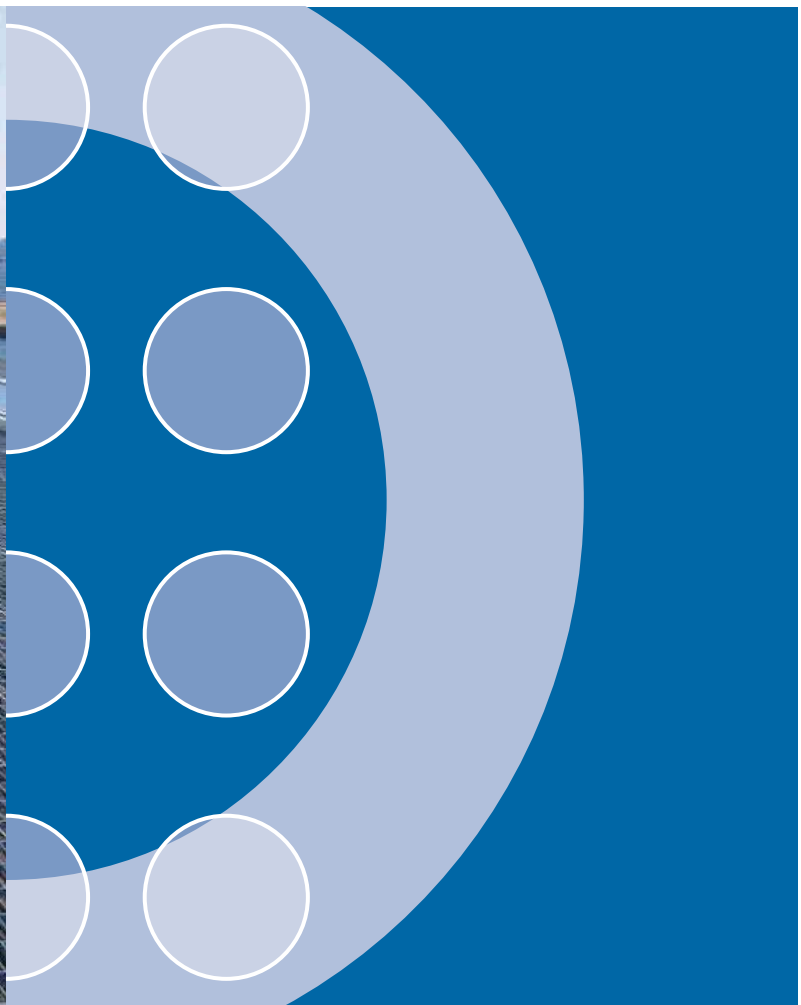
ppphyderabad@gmail.com

105, Sri Vihar Apartments

Satyam Talkies Road, Ameerpet

Hyderabad - 500 016





PREMIER POWER PRODUCTS (CAL) PVT. LTD.

[www.electroforgegratings.com](http://www.electroforgegratings.com)

